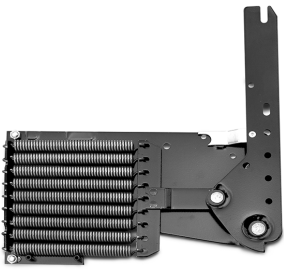


# DIY PARTS LIST





## Murphy Panel Bed Hardware Systems

### System #1

#### Do It Yourself Kits: (D.I.Y)

**Recommended for residential use. This Basic kit allows you to build your own style of bed cabinet and frame detailed in our comprehensive instructions. Great for shipping overseas as it is very compact and one system can be tailored to standard size (Single/Twin, Double/Full and Queen)**

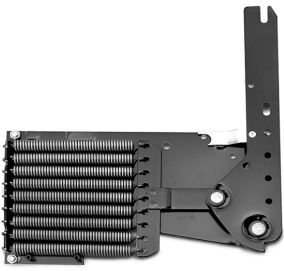
**System includes**

- 2 Mechanisms (right & left)
- 2 Mechanism covers (right & left)
- 18 Regular Springs
- 2 Regular Legs
- 1 Velcro Strap
- Hardware Assembly Bags

***This system is available in both Vertical and Side Tilt configurations and can be utilized with the Extended legs.***

**THIS SYSTEM IS NOT RECOMMENDED FOR KING SIZE**





## Murphy Panel Bed Hardware Systems

### System #2

#### Supreme Steel System:

**Recommended for residential use and raised panel design. These 16 gauge steel systems are finished in an attractive black pebble powder coat and guaranteed to support 1700 lbs of weight. Stiffener design runs horizontally for full face panel support. System includes**

- 2 Mechanisms (right & left)
- 2 Mechanism covers (right & left)
- 18 Regular Springs
- 2 Regular Legs
- 1 Cross bar
- Steel Frame (Single/Twin, Double/Full or Queen)
- 2 Horizontal Steel Stiffeners
- 1 Velcro Strap
- Hardware Assembly Bags to attach system to built cabinet

***This system is available in both Vertical and Side Tilt configurations and can be utilized with the Extended and Long leg options.***

**THIS SYSTEM IS NOT AVAILABLE FOR KING SIZE**

